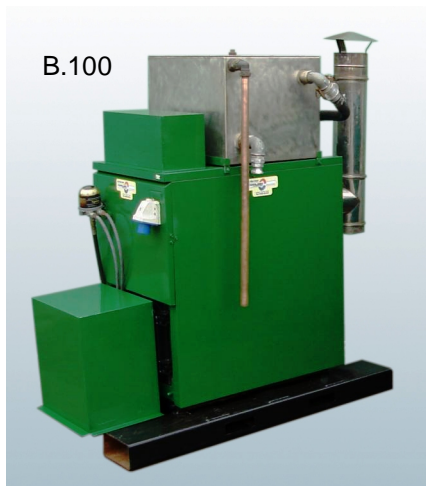


TEMPORARY AND PORTABLE HOT WATER BOILERS

B.22E



B.200



B.100

Boiler + R X V H

COOLING AND HEATING SOLUTION'S RANGE OF EQUIPMENT:

- * Air Cooled Heat Pump Chillers
- * Commercial and Industrial Fan Coils
- * LPHW Cast Iron Boilers
- * Plate Heat Exchangers
- * Water & Condensate Pumps
- * Indirect Oil Fired Heaters
- * Portable Air Conditioners
- * Spot Coolers
- * Portable Electric Heaters
- * Fans and Ventilators
- * Dehumidifiers
- * Radiant Heaters
- * dX Split Systems
- * Air Handlers
- * Building Dryers
- * Bunded Fuel Tanks
- * Road Certified Fuel Tanks
- * Temperature Monitoring



COOLING & HEATING SOLUTIONS
TEMPERATURE CONTROL SPECIALISTS

Marlwood House
Silver Street
Lymington
Hampshire
SO41 6DG
UK

T. +44 (0) 1590 681 434
E. sales@candhs.co.uk

W. www.coolingandheatingsolutions.com



TECHNICAL INFORMATION;

			Model Reference		
			B.22 E	B.100 (S)	B.200 (S)
Heating Input		kW/hr	14.4 to 21.6	97.5	220.1
Heating Output		kW/hr	14.4 to 21.6	87.1	197.7
Water Content		litres	13	51.0	165.0
Casing			Mild Steel Stove Enamelled	Polyester painted steel plate	
Dimensions	Unpacked	L x W x H	550x520x1310	1480x720x1450	1700x720x1650
Weight	Dry without skids	Kg	36	386	715
	Dry with skids	Kg	n/a	454	815
	Operating with skids	Kg	n/a	505	880
Maximum Water Head		Bar	3	4	5
Minimum Water Flow		litres/hr	3.5+/-	3708	8460
Boiler Pressure Loss		mm wg	51	130	320
Flue Gas Temperature		°C	n/a	153	177
Flue Gas Volume		m³/hr	n/a	163	353
Fuel Consumption	Kero/Diesel B.100 Diesel only for B.200	l/hr	n/a	9.73	21.86
Electrics	Supply	V/ph/hz	400/3/50	230/1/50	
	Connection	Cee Form Plug	32 Amp 5 Pin	16 Amp (blue) 3 Pin	
	Consumption	kW/hr	22	0.25	0.25
Boiler Water Connections	Flow BSPF	Inches	1	1 ½	2
	Return BSPF	Inches	1	1 ½	2
	Drain BSPF	inches	n/a	¾	¾
Pressure Jet Burner	Riello		n/a	10GS	20G
Flue Diameter		mm	n/a	150	200
Portable Boiler Ancillaries					
Mixing Tank – s/s	Size – L x W x H	mm	n/a	560x450x400	700x450x400
	Max Water Volume	l	n/a	84	106
	Water Connections BSPF	inches	n/a	2 x 1 ¼	4 x 1 ¼
High Pressure Pump (230/1/50 via a 16 amp, 3 pin, Cee Form Plug)	Maximum Flow	l/s	0.5+/-	2.4+/-	
	Minimum Flow	l/s	0.1+/-	0.83+/-	
	Maximum Pressure	Bar	3+/-	6+/-	
Plate Heat Exchanger	Size – L x W x H	mm	tba	119x116x376	243x125x525
	Tappings	inches	tba	4 x 1 ¼	4 x 1 ½



COOLING & HEATING SOLUTIONS
TEMPERATURE CONTROL SPECIALISTS

Marlwood House
Silver Street
Lymington
Hampshire
SO41 6DG
UK

T. +44 (0) 1590 681 434
E. sales@candhs.co.uk

W. www.coolingandheatingsolutions.com

